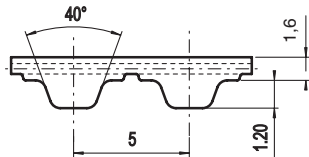


TT5 Polyurethane timing belts

ELATECH® manufactures special TT5 belts which have been expressly designed for application in circular knitting machines drives.

TT5



Belt characteristics

- Trapezoidal tooth profile according to DIN 7721 T1
- Metric pitch 5 mm
- Standard colour: blue with kevlar cords, white with steel cords, other colours available on request
- Polyurethane 88 Sh. A

- Width tolerance: $\pm 0,5$ [mm]
- Length tolerance: $\pm 0,5$ [mm]
- Thickness tolerance: $\pm 0,2$ [mm]

ELATECH® belts TT5 are available in the following executions:

ELATECH® - V

- A special slicing and welding process offers superior traction load resistance.
- They are available both with steel and aramid cords.
- Special colours available on demand.
- Available in any length tooth by tooth.



ELA-flex SD™ truly endless

- ELA-flex SD™ TT5 have no splice and welding and therefore offer best traction resistance load.
- They are available both with steel and aramid cords.
- Special colours available on demand.
- Available in all lengths tooth by tooth up to a length of 13500 mm.

Technical data

| Belt width b [mm] | Allowable tensile load Type M F_{Tzul} [N] | Allowable tensile load Type V F_{Tzul} [N] | Breaking load Type M F_{Br} [N] | Weight [kg/m] |
|-------------------------|---|---|--|------------------|
| ARAMID (Kevlar) cords | | | | |
| 10 | 840 | 420 | 3360 | 0,019 |
| STEEL cords | | | | |
| 10 | 380 | 190 | 1500 | 0,021 |



| Minimum pulley number of teeth and minimum idler diameter | | | |
|---|---------------------------------------|--------------|-------|
| 10 TT5 | | TYPE OF CORD | |
| | | ARAMID | STEEL |
| | Timing pulley z_{min} | 12 | 10 |
| | Idler running on belt teeth d_{min} | 30 mm | 30 mm |
| | Timing pulley z_{min} | 15 | 15 |
| | Idler running on belt back d_{min} | 30 mm | 30 mm |

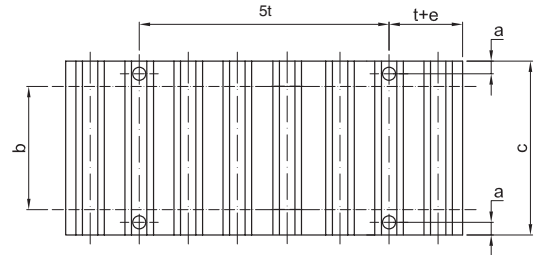
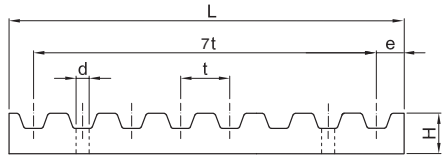
Clamp plates

Clamp plates may be used as positive attachment of the belt ends in numerous applications in linear drives. Clamp plates must have the correct belt profile, guarantee a uniform clamping force on all the clamped belt surface and must be rigid.

For standard applications a minimum of 8 teeth in clamp is recommended.

For use with timing belts with HPL cords, a minimum of 12 teeth in clamp is recommended.

EAGLE™ clamp plates are available as semi finished product. Standard material for clamp plates is aluminium.



| Type | a (mm) | d (mm) | e (mm) | L (mm) | H (mm) | Belt width b (mm) | | | | | | | |
|------|--------|--------|--------|--------|--------|-------------------|----|----|----|----|----|-----|-----|
| | | | | | | 6 | 10 | 16 | 25 | 32 | 50 | 75 | 100 |
| C | | | | | | | | | | | | | |
| T5 | 6 | 5,5 | 3,2 | 41,8 | 8 | - | 29 | 35 | 44 | - | - | - | - |
| AT5 | 6 | 5,5 | 3,2 | 41,8 | 8 | - | 29 | 35 | 44 | - | - | - | - |
| T10 | 8 | 9 | 5 | 80 | 15 | - | - | 41 | 50 | 57 | 75 | 100 | 125 |
| AT10 | 8 | 9 | 5 | 80 | 15 | - | - | 41 | 50 | 57 | 75 | 100 | 125 |
| T20 | 10 | 11 | 10 | 160 | 20 | - | - | - | 56 | 63 | 81 | 106 | 132 |
| AT20 | 10 | 11 | 10 | 160 | 20 | - | - | - | 56 | 63 | 81 | 106 | 132 |

| Type | a (mm) | d (mm) | e (mm) | L (mm) | H (mm) | Belt width b (inch/100) | | | | | | | |
|------|--------|--------|--------|--------|--------|-------------------------|-----|------|-----|-----|------|-----|-----|
| | | | | | | 025 | 031 | 037 | 050 | 075 | 100 | 150 | 200 |
| C | | | | | | | | | | | | | |
| XL | 6 | 5,5 | 3,5 | 42,5 | 8 | 25,5 | 27 | 28,5 | - | - | - | - | - |
| L | 8 | 9 | 6 | 76,6 | 15 | - | - | 36 | 39 | 45 | 51,5 | 64 | 77 |
| H | 10 | 11 | 9 | 106,9 | 22 | - | - | - | 45 | 51 | 57,5 | 70 | 83 |

| Type | a (mm) | d (mm) | e (mm) | L (mm) | H (mm) | Belt width b (mm) | | | | | | | |
|------|--------|--------|--------|--------|--------|-------------------|----|----|----|----|----|----|-----|
| | | | | | | 15 | 20 | 25 | 30 | 40 | 50 | 55 | 85 |
| C | | | | | | | | | | | | | |
| 5M | 6 | 5,5 | 3,4 | 41,8 | 8 | 34 | - | 44 | - | - | - | - | - |
| 8M | 8 | 9 | 5 | 66 | 15 | 40 | 45 | - | 55 | - | 75 | - | 110 |
| 14M | 10 | 11 | 9 | 116 | 22 | - | - | 56 | - | 71 | - | 86 | 116 |

| Type | A (mm) | B (mm) | L (mm) |
|-----------|--------|--------|--------|
| EAGLE 8M | 10 | 75 | 120 |
| EAGLE 14M | 18 | 130 | 200 |

